



Buckinghamshire
Fire & Rescue Service

Fire & Rescue Service updates

North West Chilterns Community
Board



Agenda

POINTS OF DISCUSSION

01 Our organisation

02 Community safety initiatives

03 Summer pressures 2022

04 New challenges



Our organisation



Buckinghamshire & Milton Keynes Fire Authority



How is the Authority made up

- 5 councillors from Milton Keynes council
- 12 councillors from Buckinghamshire Council
- 11 conservative, 3 Labour, 3 Liberal Democrat



Simon Rouse
Chair of the Fire Authority



Buckinghamshire Fire & Rescue Service



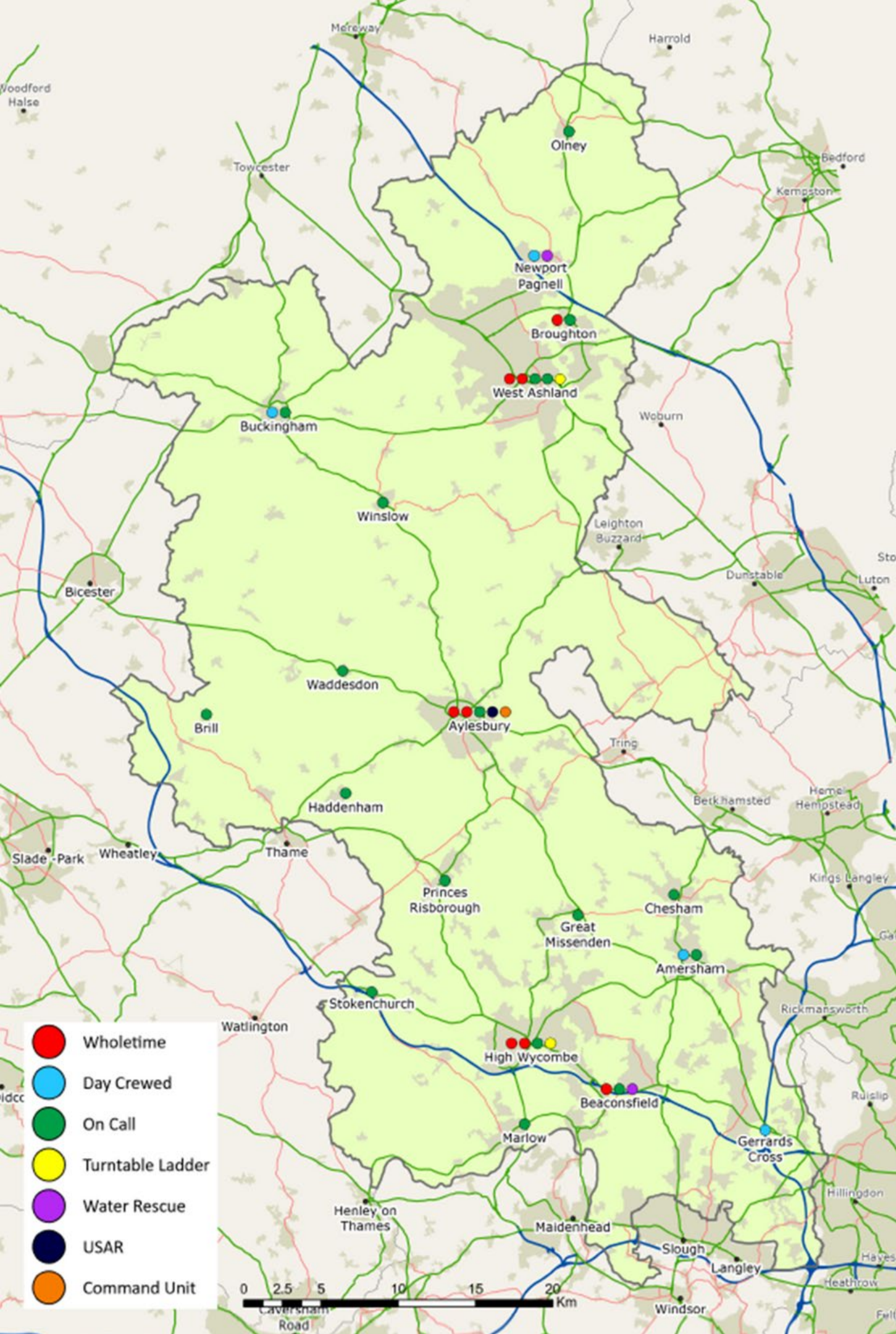
Our people

- 300 Wholetime (full time) Operational staff
- 96 On-Call (part time contracted) Operational staff
- 126 support staff



Jason Thelwell
Chief Fire Officer



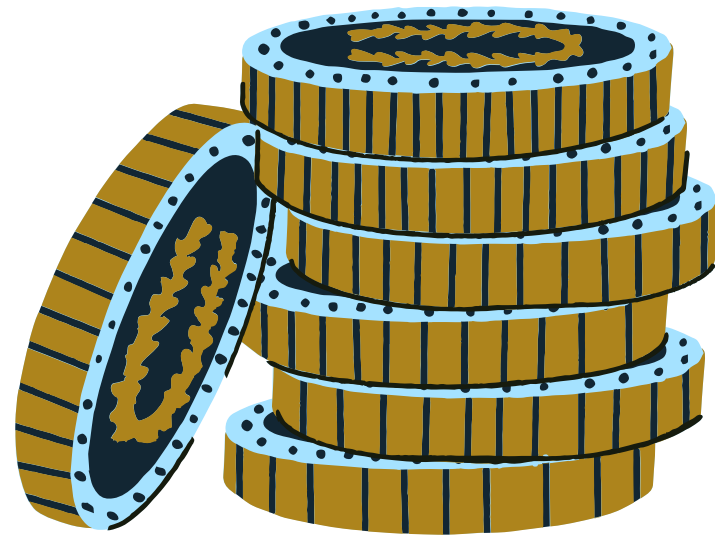


Our Fire Stations

- 9 Wholetime stations, 7 of which have On-Call units
- 10 stand alone On-Call stations
- 30 Fire Appliances
- 10 specialist appliances
- 5 Urban Search and Rescue Modules



Our finances



SOURCE	£ M
Business Rates and Revenue support Grant	£9,389
Specific Grants	£1,110
Council Tax	£22,981
Total	£33,480 Million



Community safety initiatives



Our vision

To ensure Buckinghamshire and Milton Keynes are the safest places in
England in which to live, work and travel.



OUR FOUR COMMUNITY SAFETY PRIORITIES



SAFER HOMES



SAFER NEIGHBOURHOODS



SAFER ROADS



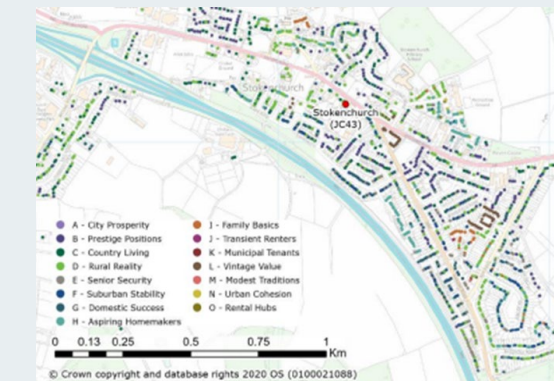
SAFER ENVIROMENT

The community safety priorities under pin, what we call internally, our Prevention Strategy which has been rewritten for 2022.



High Wycombe Service Delivery Area

Service delivery areas



Community Prevention is divided into Service Delivery Areas with a wholetime station at its core

North West Chilterns area forms part of the High Wycombe Service delivery area

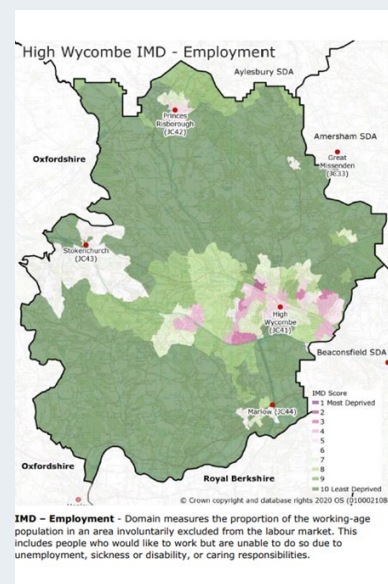
- Wholetime Station- High Wycombe Fire Station
- Station Commander Andrew Holtzhausen
- On-Call Station-Princes Risborough and Stokenchurch Fire Stations
- Station Commander Paul Henderson (On-Call Station Commander)



Better Understanding the Local Community, Risk and Incident Trends

This document is designed to assist all staff to understand the local community and environment within High Wycombe Service Delivery Area. This report includes information about demographics, the built environment and fire service specific risks within High Wycombe Service Delivery Area.

This document is an introduction into the local demands and challenges which are specific to High Wycombe Service Delivery Area and should be a building block to inform the development of High Wycombe station plans and activities.



Buckingham service delivery area

Community safety priorities

Safer Homes

Reduction in accidental dwelling fires and fire safety in the home

Outlying village Reach out



Safer Environments

Unattended bonfires

Reduction in Deliberate fires



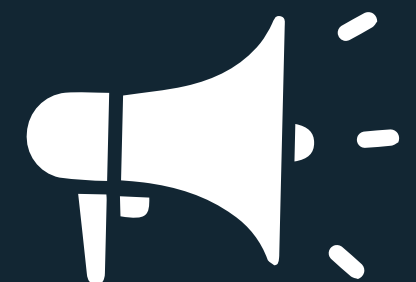
Road safety



Safer Neighbourhoods

Blue Light day

Community engagement



Summer pressures 2022

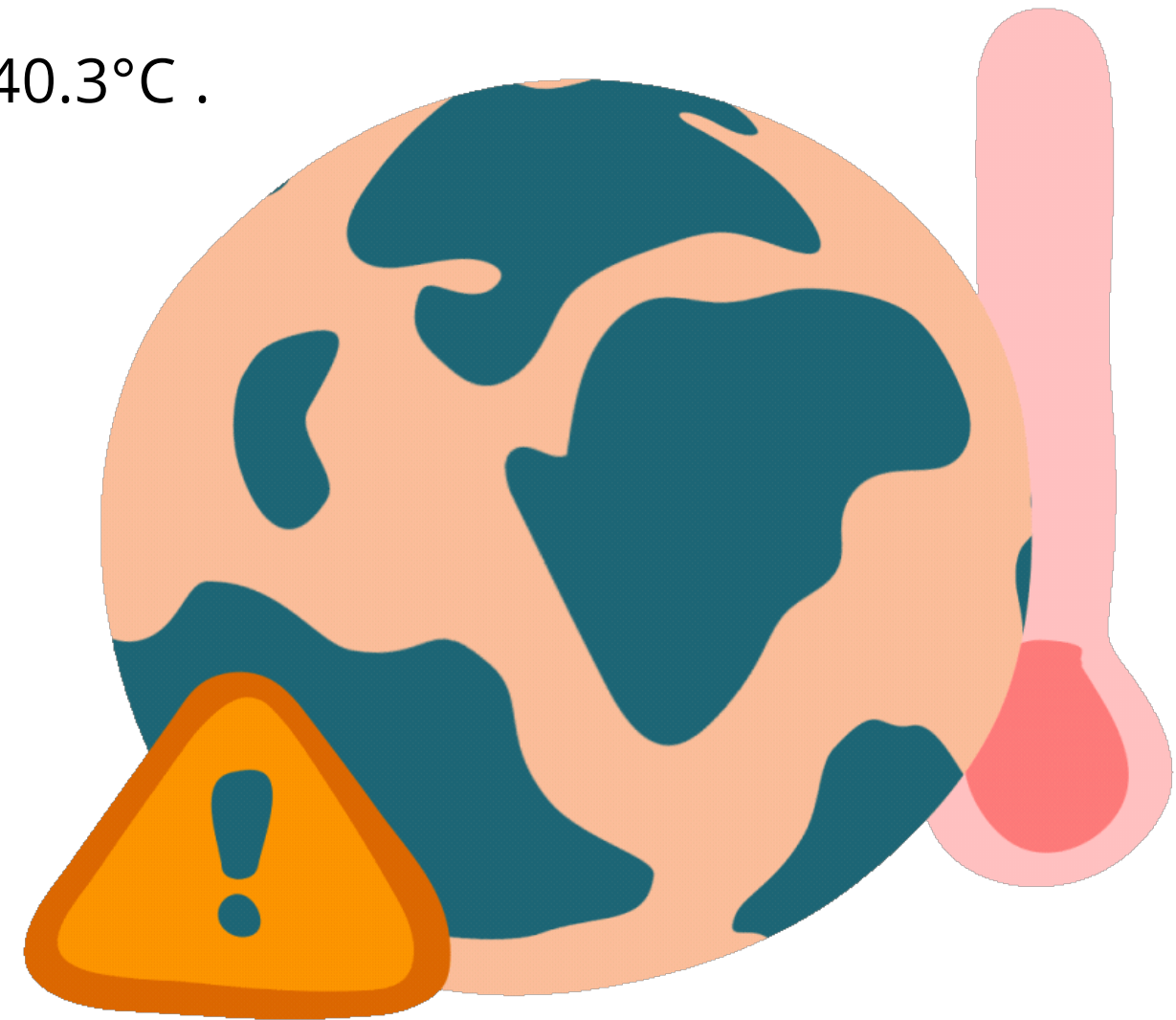


Record temperatures

The months of July (16 - 19) and August (9 - 15) 2022, brought record high temperatures and dry weather that presented many challenges for Fire and Rescue Services (FRSs) and other emergency responders across the country.

The Met office issued its first red warning for heat affecting central and south England, which was in place for 18 & 19 July.

On the 19 July the UK recorded its highest ever temperature of 40.3°C .



Major Incidents declared

By Buckinghamshire Fire & Rescue

On Tuesday 19 July two major incidents were declared, one in the north of the county at 13:05

- Kiddi Caru Nursey Walnut Tree Milton Keynes

One in the south of the county at 14:37. Whitehouse Farm,

- Wooburn Moor, High Wycombe

In the following three hours, BFRS supported by neighbouring FRS's were also mobilised to large scale, protracted incidents at Chearsley, Buckland and Denham resulting in resources being exceptionally stretched.



Service Wide Major Incident

Servicing five major fires across our area, two of which were declared major incidents from the scene of operations, triggering the declaration of a Service wide major incident, supported by the Thames Valley Local Resilience Forum (TV LRF).

BFRS were ably assisted by many of our neighbouring Services including Oxfordshire, Northamptonshire, Bedfordshire, Royal Berkshire, Hertfordshire and a specialist water carrier from Dorset and Wiltshire, despite them all being under operational pressures themselves.



MAJOR
INCIDENT

Calls taken by Thames Valley Fire Control Service (only) for incidents in Bucks

Major incidents were declared by fifteen FRSs across the country including neighbouring services in London, Bedfordshire and Hertfordshire, as a result of the devastating outbreak of fires.

The Service attended an unprecedented number of calls, including many fires in the open / wildfires.

BFRS has debriefed, reviewed and collated the information from this period to improve our service delivery and staff welfare at future events.

DATE	Prev five-year average	2022	Increase %
16- Jul	48	180	%
17-Jul	48	78	64%
18- Jul	64	85	34%
19- Jul	41	220	439%
09- Aug	45	108	139%
10- Aug	40	75	89%
11- Aug	49	108	121%
12- Aug	44	157	258%
13- Aug	50	106	111%
14- Aug	45	96	115%
15- Aug	41	84	105%

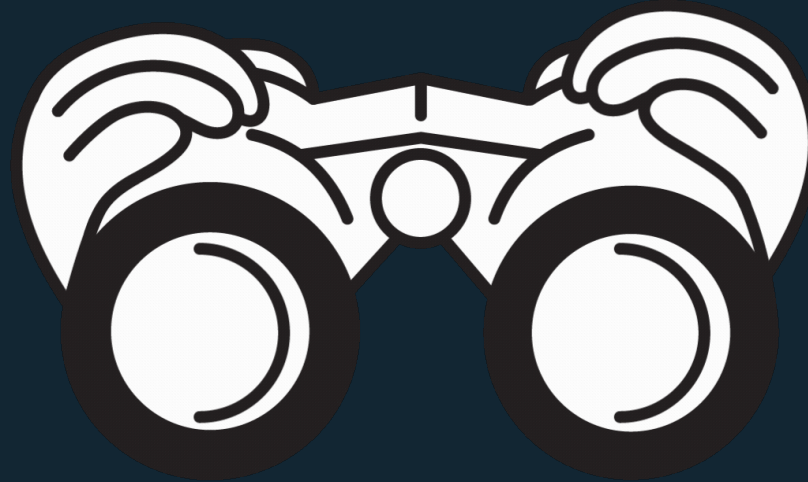


New Challenges



Horizon scanning

- HS2 – the second longest tunnel in the UK will be beneath the Chiltern Hills
- Climate change-hotter summers, wetter winters
- Development within Buckinghamshire and Milton Keynes
- Fire Reform White Paper





ANY QUESTIONS

